



**BARNETT**  
Commercial Realty, Inc.

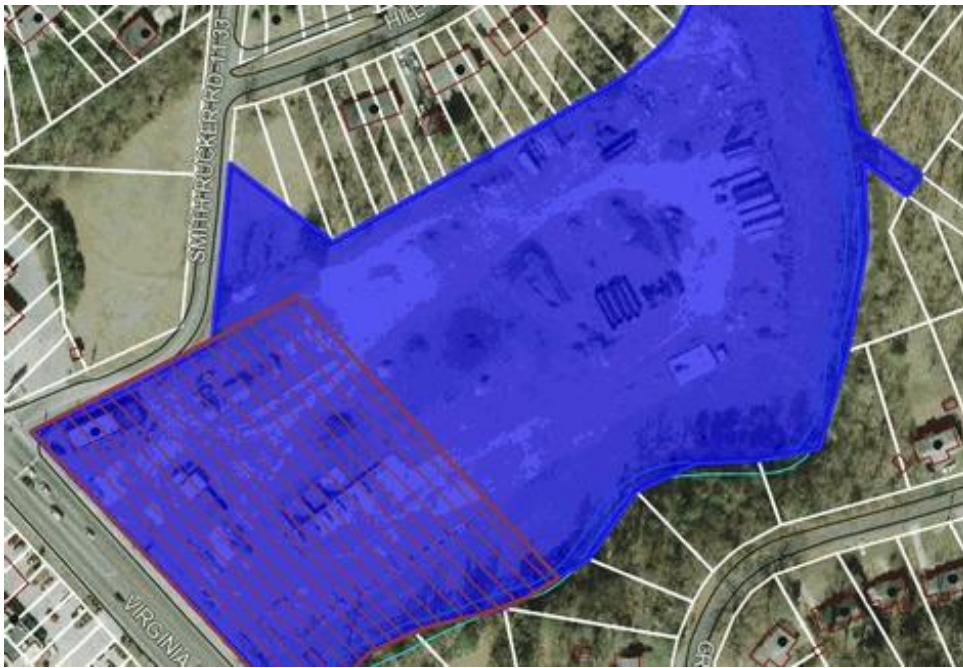
5 East Church Street  
Martinsville, VA 24112  
Tel: 276.656.3538  
Fax: 276.656.3639

## Excellent Investment Opportunity- +/- 3.0 Acre Signalized Corner Lot with 450 ft Road Frontage on US Bus 220.

1530 Virginia Ave/ US Bus 220  
Martinsville, VA 24112

For more information contact [Bill Manning](#)

Sale Price: **\$1,500,000**



11.937 AC Signalized Corner Lot with 450 ft Road Frontage on US Bus 220.

Owner may be willing to Subdivide:

Lot A	1.4+/- AC
\$525,000	
Lot B	2.0+/- AC
\$495,000	

It is one of the last signalized intersections in the Martinsville Henry County commercial corridor.

The property is located on Business U.S. 220 in

Martinsville, VA on the going home side of the highway and is only 0.4 mile away from the Wal-Mart and Lowe's Supercenter.

The traffic count is 18,000.

**Property Type:** investment, land, special purpose  
**Property Status:** available



**BARNETT**  
Commercial Realty, Inc.

5 East Church Street  
Martinsville, VA 24112  
Tel: 276.656.3538  
Fax: 276.656.3639

## Excellent Investment Opportunity- +/- 3.0 Acre Signalized Corner Lot with 450 ft Road Frontage on US Bus 220.

1530 Virginia Ave/ US Bus 220  
Martinsville, VA 24112

Sale Price: **\$1,500,000**

For more information contact [Bill Manning](#)

