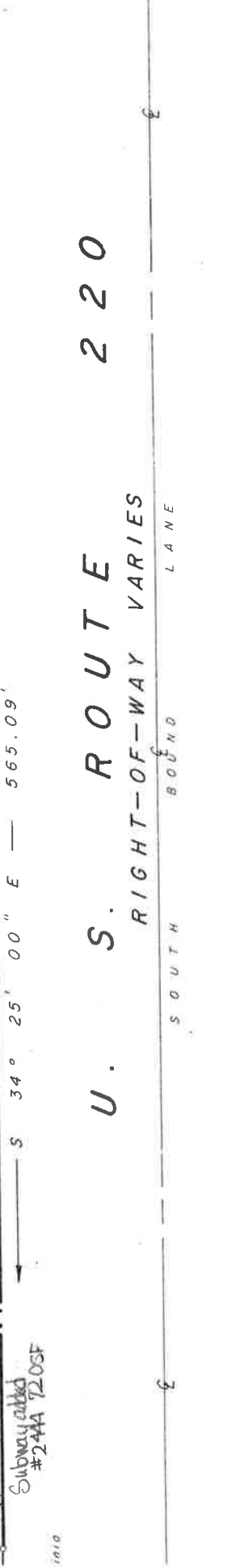
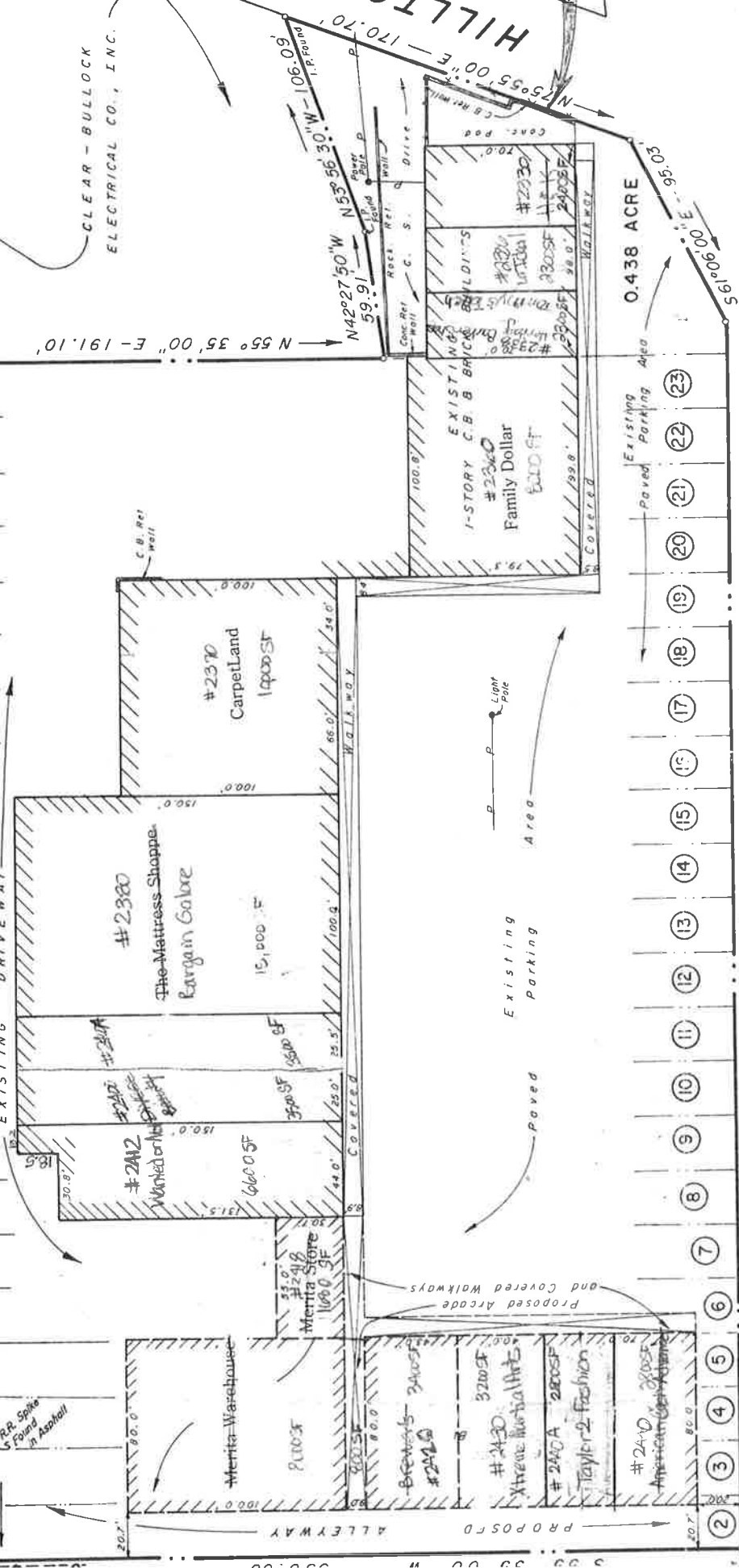
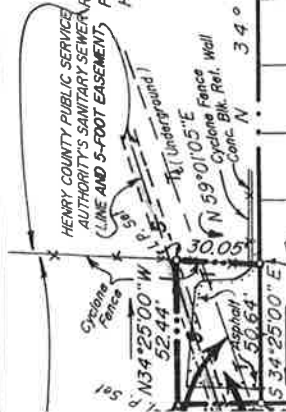


TRACT 1
 11.325 ACRES
 HENRY COUNTY PUBLIC SERVICE
 AUTHORITY'S SANITARY SEWER
 (LINE AND 5-FOOT EASEMENT)
 Furniture Corporation in M.L.B. 88-Pg. 329,
 H.C.C.C.C.O.



U. S. ROUTE 220
 RIGHT-OF-WAY VARIES
 SOUTH BOUND LANE

Subway added
 #244A 72.05F