

FRITH ST. RT. 1

FONTAINE DRIVE

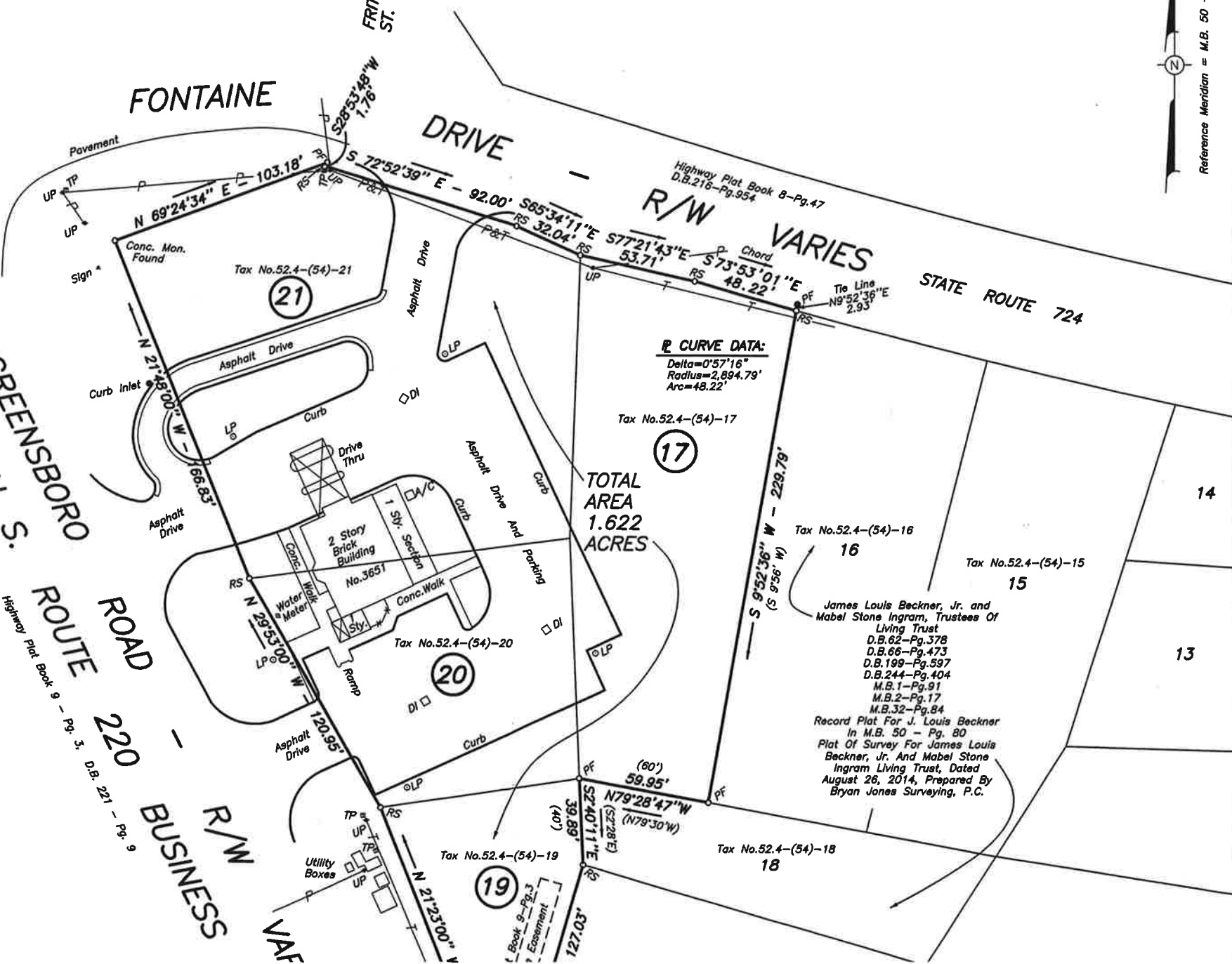
STATE ROUTE 724

GREENSBORO ROAD

ROUTE 220

BUSINESS R/W

VALE



Fontaine Drive

Fontaine Drive

R/W VARIES

State Route 724

Greensboro Road

Route 220

Business R/W

Vale

Conc. Man. Found

Tax No. 52.4-(54)-21

21

Asphalt Drive

Asphalt Drive

Curb Inlet

Curb

Asphalt Drive

Drive Thru

Asphalt Drive And Parking

1 Sty. Section

2 Story Brick Building No. 3651

Water Meter

Conc. Walk

Ramp

Tax No. 52.4-(54)-20

20

Asphalt Drive

Asphalt Drive

Utility Boxes

Tax No. 52.4-(54)-19

19

Book 9-Pg. 3 Easement

**R CURVE DATA:**  
 Delta=0°57'16"  
 Radius=2,694.79'  
 Arc=48.22'

Tax No. 52.4-(54)-17

17

TOTAL AREA  
1.622 ACRES

Tax No. 52.4-(54)-16

16

Tax No. 52.4-(54)-15

15

James Louis Beckner, Jr. and Mabel Stone Ingram, Trustees Of Living Trust  
 D.B. 62-Pg. 378  
 D.B. 66-Pg. 473  
 D.B. 199-Pg. 597  
 D.B. 244-Pg. 404  
 M.B. 1-Pg. 91  
 M.B. 2-Pg. 17  
 M.B. 32-Pg. 84

Record Plat For J. Louis Beckner In M.B. 50 - Pg. 80  
 Plat Of Survey For James Louis Beckner, Jr. And Mabel Stone Ingram Living Trust, Dated August 26, 2014, Prepared By Bryan Jones Surveying, P.C.

Tax No. 52.4-(54)-18

18

Highway Plat Book 8-Pg. 47  
 D.B. 216-Pg. 954

Highway Plat Book 9 - Pg. 3  
 D.B. 221 - Pg. 9